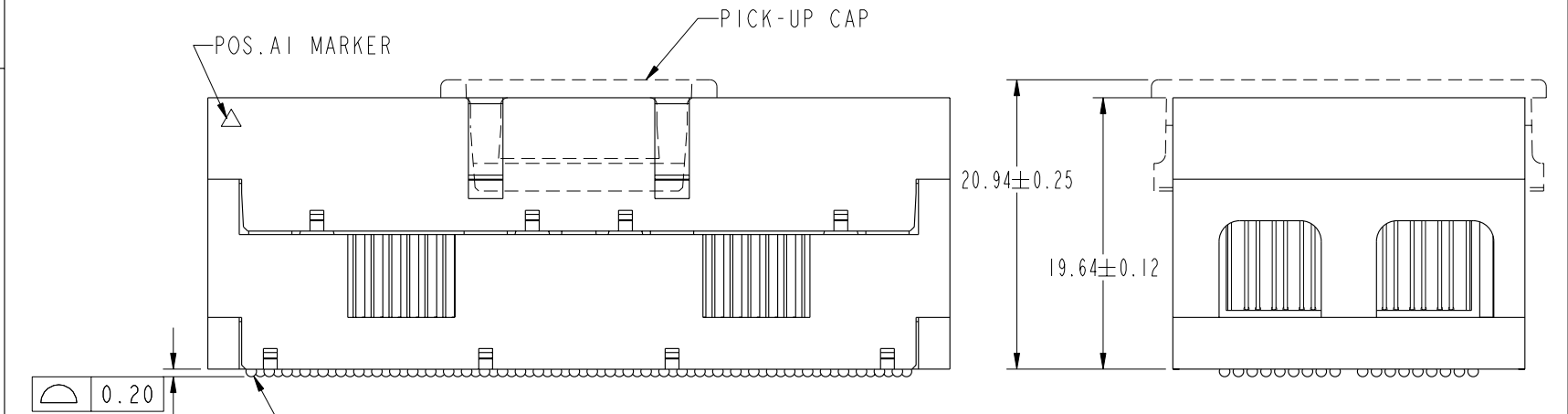
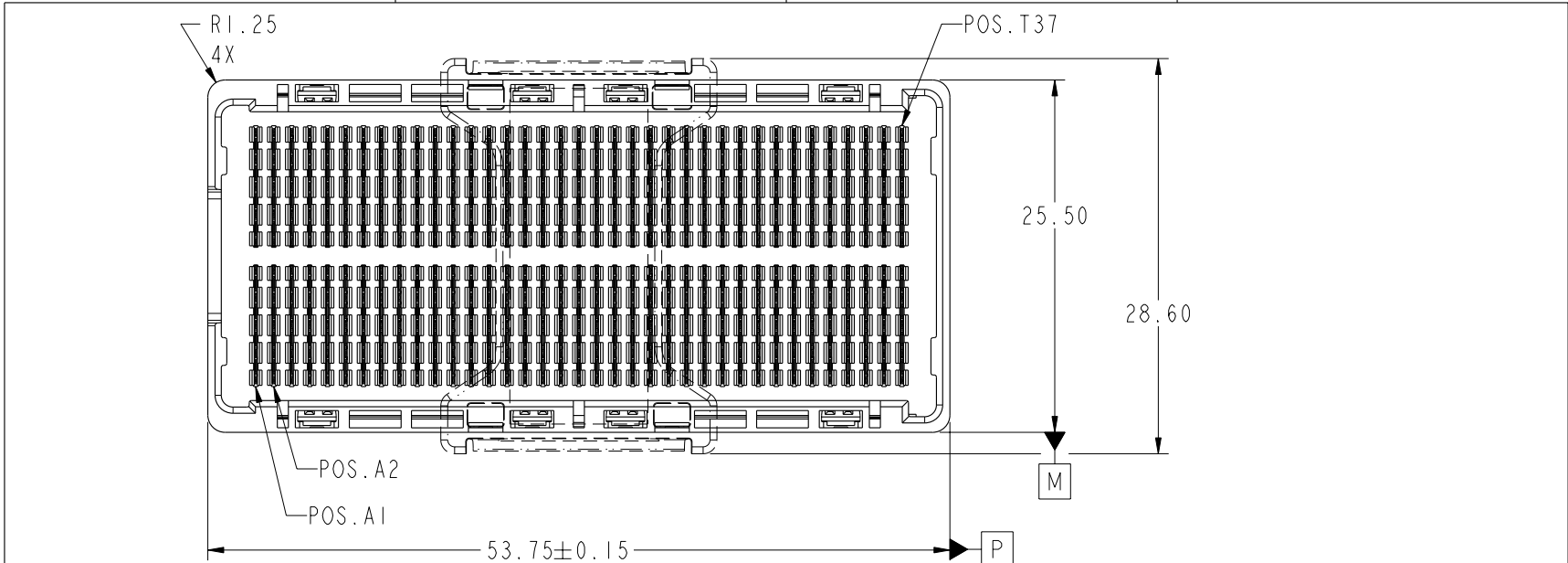




This document is the property of and embodies CONFIDENTIAL and PROPRIETARY information of FCI. No part of the information shown on this document may be used in any way or disclosed to others without the written consent of FCI. Copyright FCI.



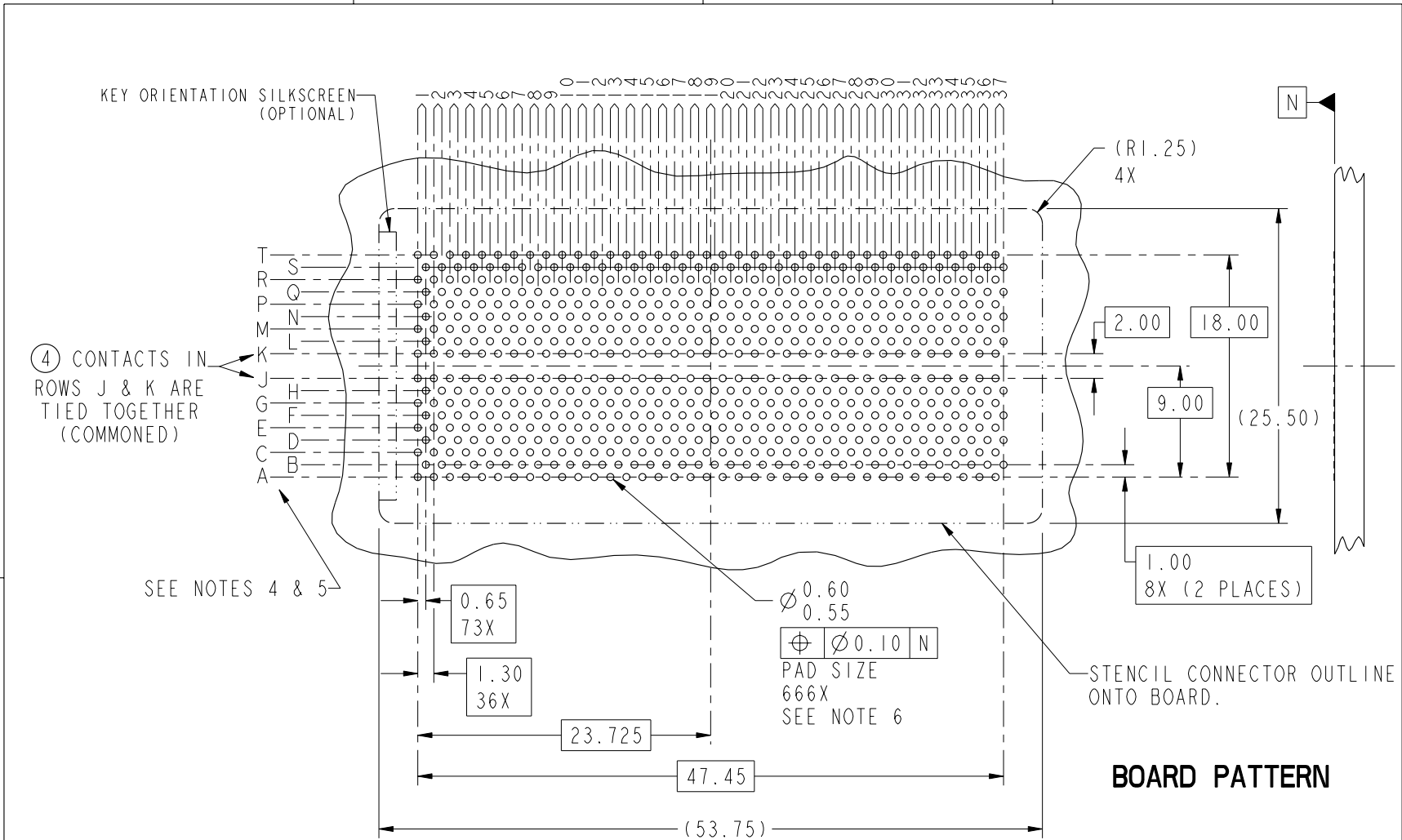
Ø 0.76 SOLDER BALLS
 666X
 SEE NOTE 2

⊕	Ø 0.30	P	M
---	--------	---	---

mat'l code				SEE NOTE 1				tolerances unless otherwise specified				CUSTOMER		FCI		www.fciconnect.com	
ltr	ecn no.	dr	date	linear	0.X ± 0.3				COPY		projection	title		GIG-Array			
A	V20428	LRJ	3/11/02		0.XX ± 0.10				MM			20mm PLUG ASSY. 296 SIG. POS.					
C	V03-0663	TAB	06/12/03		0.XXX ± 0.050				scale			product family		GIG-Array		code	
D	V05-0052	VS	10/14/05		0° ± 2°				1:1			size		55727		213	
E	V06-0558	LP	2006/07/13									dwg no		A		sheet	
F	V07-0418	LP	2007-06-19													1 of 4	
sheet index		revision sheet		F	F	F	F										
				1	2	3	4										



This document is the property of and embodies CONFIDENTIAL and PROPRIETARY information of FCI. No part of the information shown on this document may be used in any way or disclosed to others without the written consent of FCI. Copyright FCI.



④ CONTACTS IN ROWS J & K ARE TIED TOGETHER (COMMONED)

SEE NOTES 4 & 5

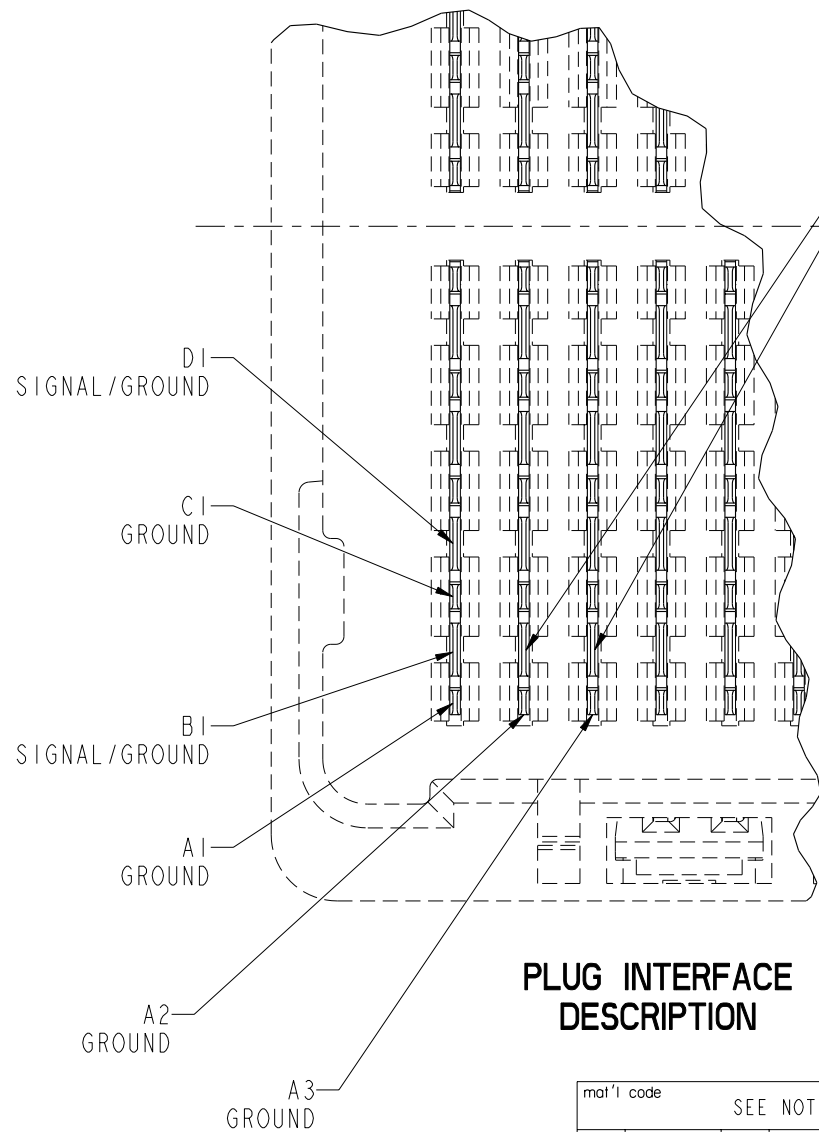
$\phi 0.60$
 0.55
 $\phi 0.10$ N
 PAD SIZE
 666X
 SEE NOTE 6

STENCIL CONNECTOR OUTLINE ONTO BOARD.

BOARD PATTERN

mat'l code				SEE NOTE 1		tolerances unless otherwise specified		CUSTOMER		FCI www.fciconnect.com	
ltr	ecr no.	dr	date	linear	0.X ± 0.3		COPY		projection	title	
F	-	-	-		0.XX ± 0.10		MM			GIG-Array	
					0.XXX ± 0.050		←			20mm PLUG ASSY. 296 SIG. POS.	
				angles	0° ± 2°		scale		product family		
				dr	R. JOHNSON	8/13/01	2:1		GIG-Array		
				enr	D. JOHNESCU	8/13/01			code		
				chr	D. JOHNESCU	3/7/02			size		
				appd	D. JOHNESCU	3/7/02			dwg no		
sheet index		revision sheet						A		55727	
										213	
										sheet	
										2	

cage code 22526


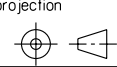

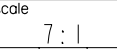


B2-B3
DIFFERENTIAL PAIR
TYPICAL

NOTES:

- ① MATERIAL:
HOUSING: LCP
CONTACT: COPPER ALLOY
PLATING (CONTACT): Au OVER Ni.
UL RATING: 94 V-0
SOLDER BALL: (SEE TABLE) EUTECTIC
SnPb OR LEADFREE 95.5 Sn/4Ag/0.5Cu
- ② SOLDER BALLS WILL NOT BE PERFECT SPHERICAL SHAPE DUE TO REFLOW ATTACHMENT.
- ③ MATED HEIGHT EFFECTED BY CUSTOMERS' PCB PAD SIZE, PLATING, SOLDER REFLOW PROFILE & SOLDER PASTE.
- ④ CONTACTS IN ROWS A,C,E,G,J,K,M,P,R AND T ARE SINGLE BEAM CONTACTS, TYPICALLY USED AS GROUND PINS.
(NOTE: CONTACTS IN ROWS J & K ARE TIED TOGETHER [COMMONED])
- ⑤ CONTACTS IN ROWS B,D,F,H,L,N,Q AND S ARE DUAL BEAM CONTACTS, TYPICALLY USED AS SIGNAL PINS.

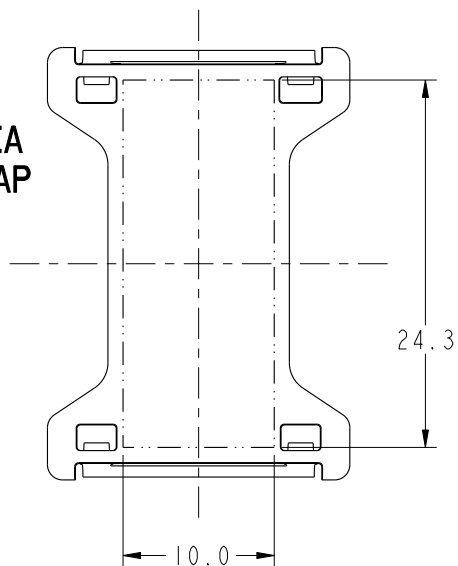
PLUG INTERFACE DESCRIPTION

mat'l code				SEE NOTE 1		tolerances unless otherwise specified		CUSTOMER		 www.fciconnect.com	
ltr	ecr no.	dr	date	linear	0.X ±0.3		COPY		  	title	
F	-	-	-		0.XX ±0.10		GIG-Array			20mm PLUG ASSY. 296 SIG. POS.	
					0.XXX ±0.050		product family			GIG-Array	
				angles	0° ±2°		size		dwg no		
				dr	R. JOHNSON	8/13/01	A		213		
				engr	D. JOHNESCU	8/13/01	55727		sheet		
				chr	D. JOHNESCU	3/7/02			3		
				appd	D. JOHNESCU	3/7/02					
sheet index	revision sheet										

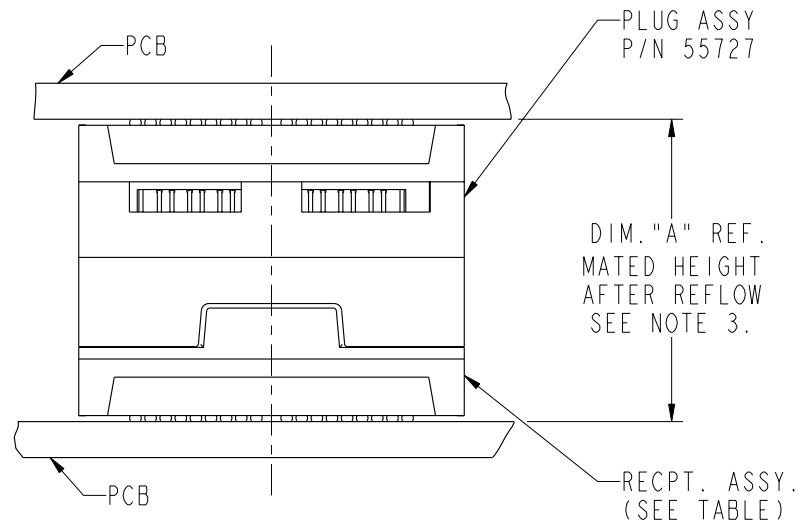
This document is the property of and embodies CONFIDENTIAL and PROPRIETARY information of FCJ. No part of the information shown on this document may be used in any way or disclosed to others without the written consent of FCJ. Copyright FCJ.

PRODUCT NUMBER	SOLDER BALL
55727-001	SnPb
55727-001LF	SnAgCu LEADFREE (7)(8)

**FLAT AREA
PICK-UP CAP**



END VIEW OF MATED CONNECTORS



DIM. "A"	RECPT. ASSY. P/N
25	55701
35	55733

- ⑥ SPECIFIED POSITIONAL TOLERANCE DEFINES PAD TO PAD LOCATION WITHIN LAND PATTERN. POSITIONAL TOLERANCE OF LAND PATTERN TO FUDICIAL MARKS OR PCB DATUMS SHALL BE DEFINED BY CUSTOMER. FOR RECOMMENDED PRODUCT APPLICATION AND PCB DESIGN DETAILS, SEE DOC. NO. GS-20-016.
- ⑦ FOR PROPER APPLICATION FOLLOW FCI APPLICATION SPECIFICATION GS-20-033 LEADFREE SOLDER BALLS WILL NOT SOLDER PROPERLY IN A LEADED SOLDER PROCESS DUE TO A HIGHER REFLOW TEMPERATURE, LEADFREE PRODUCT IS THEREFORE NOT BACKWARDS COMPATIBLE WITH LEADED OR SOME SOLDERING APPLICATIONS. REFERENCE FCI APPLICATION SPECIFICATION.
- ⑧ THIS PRODUCT MEETS THE EUROPEAN UNION DIRECTIVES AND OTHER COUNTRY REGULATIONS AS DESCRIBED IN GS-22-008. PRODUCT MEETING WITH THES DIRECTIVE IS IDENTIFIED IN THE LOT CODE NUMBER MARKED ON EACH PART BY HAVING AN "X" IN THE SEVENTH CHARACTER POSITION.

mat'l code				SEE NOTE 1		tolerances unless otherwise specified		CUSTOMER		FCI www.fciconnect.com	
ltr	ecr no.	dr	date	linear	0.X ±0.3		COPY		projection	title	
F	-	-	-		0.XX ±0.10		MM			GIG-Array	
					0.XXX ±0.050		1:1			20mm PLUG ASSY. 296 SIG. POS.	
				angles	0° ±2°		scale		product family		
				dr	R. JOHNSON	8/13/01	A		GIG-Array		
				enr	D. JOHNESCU	8/13/01	A		code		
				chr	D. JOHNESCU	3/7/02	A		213		
				appd	D. JOHNESCU	3/7/02	A		sheet		
sheet index		revision sheet								4	

This document is the property of and embodies CONFIDENTIAL and PROPRIETARY information of FCI. No part of the information shown on this document may be used in any way or disclosed to others without the written consent of FCI. Copyright FCI.